

PRECISION METAL SMALL PARTS MACHINING

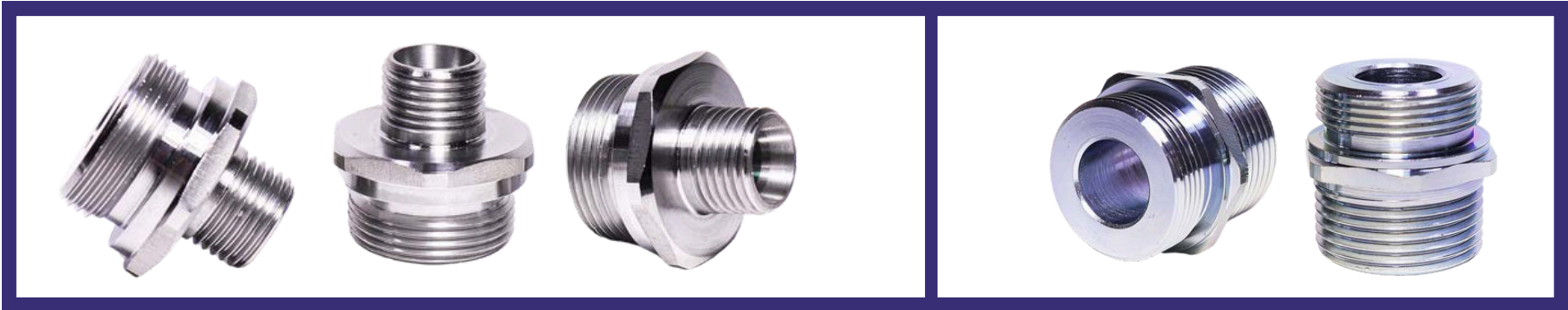


Globo S.r.l.
since 2004 - Verolanuova (BS)

OUR HISTORY

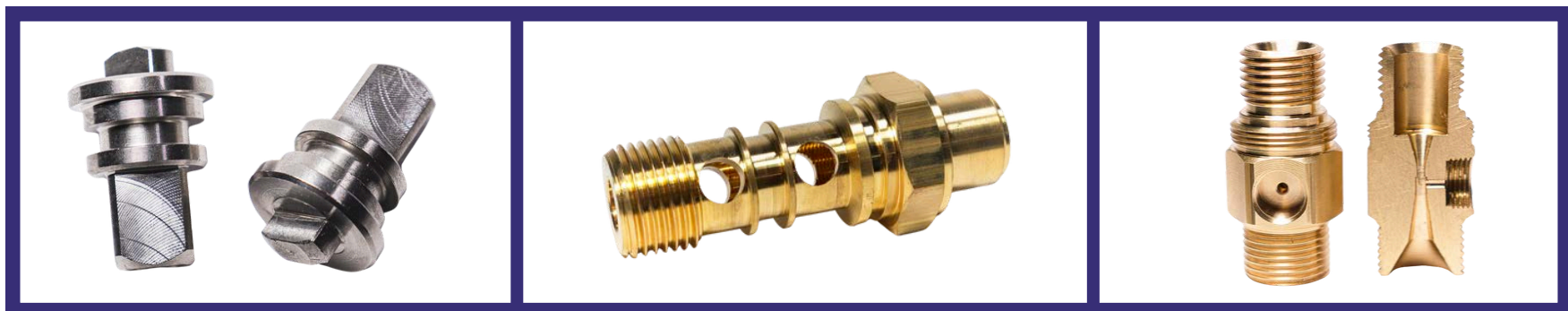
Globo S.r.l., founded in 2004 in Verolanuova (Brescia) by Francesco and Michele Binetti, is a family-owned company specialized in the production of small turned parts according to customer specifications, with diameters ranging from 4 mm to 42 mm. With the new entry of Nicola Binetti in 2009 and Chiara Binetti in 2017, the company strengthened its production and commercial support. Thanks to investments and a dynamic team, Globo S.r.l. now exports 30% of its production, serving national and international clients with quality and punctuality.





STAINLESS STEEL

STAINLESS STEEL



STAINLESS STEEL

BRASS

BRASS

WHAT WE DO

We are specialized in the **production of precision small metal parts** for various industrial sectors, managing all stages of processing.

We realize **CNC turning, bending, tumbling, crimping, assembly, deburring, and washing**, also offering surface and **galvanic treatments** through trusted partners.

We work with **ferrous and non-ferrous materials**, such as stainless steel, brass, and aluminum, in compliance with current regulations.



MACHINE PARK INDUSTRY 4.0

WAREHOUSE RAW MATERIAL

WAREHOUSE FINISHED PRODUCTS

WAREHOUSE TOOLS



3 GILDEMEISTER SPRINT 32/8

Automatic lathe with 5 linear axes, 2 C axes, and 28 tool stations.
Processing capacity for small metal parts up to max \varnothing 32 mm and length 600 mm.

2 GILDEMEISTER SPRINT 20/8

Automatic lathe with 6 linear axes, 2 C axes, and 25 tool stations.
Processing capacity for small metal parts up to max \varnothing 20 mm and length 600 mm.

GILDEMEISTER SPEED 25/8

Automatic lathe with 6 linear axes, 2 C axes, and 25 tool stations.
Processing capacity for small metal parts up to max \varnothing 20 mm and length 600 mm.

HANWA XD20 II

Automatic lathe with 9 linear axes, 2 C axes, and 27 tool stations.
Processing capacity for small metal parts up to max \varnothing 20 mm and length 160 mm.

GILDEMEISTER SPRINT 20/5

Automatic lathe with 5 linear axes, 2 C axes, and 23 tool stations.
Processing capacity for small metal parts up to max \varnothing 20 mm and length 600 mm.

STAR SR38

Automatic lathe with three front workstations and three counter-tool stations.
Processing capacity for small metal parts up to max \varnothing 42 mm and length 320 mm.

GILDEMEISTER GD 26/5

Automatic lathe with 5 linear axes.
Processing capacity for small metal parts up to max \varnothing 33 mm.

HANWA XD 20IIV

Automatic lathe with 7 linear axes and 4 rotating axes.
Processing capacity for small metal parts up to max \varnothing 20 mm.

HANWA XD 38II-R

Automatic lathe with 6 linear axes, 4 rotating axes, and 25 tool stations.
Processing capacity for small metal parts up to max \varnothing 38 mm.

STAR TECHNOLOGY BENDING MACHINE

OP CRIMPING MACHINE



WORK CENTER

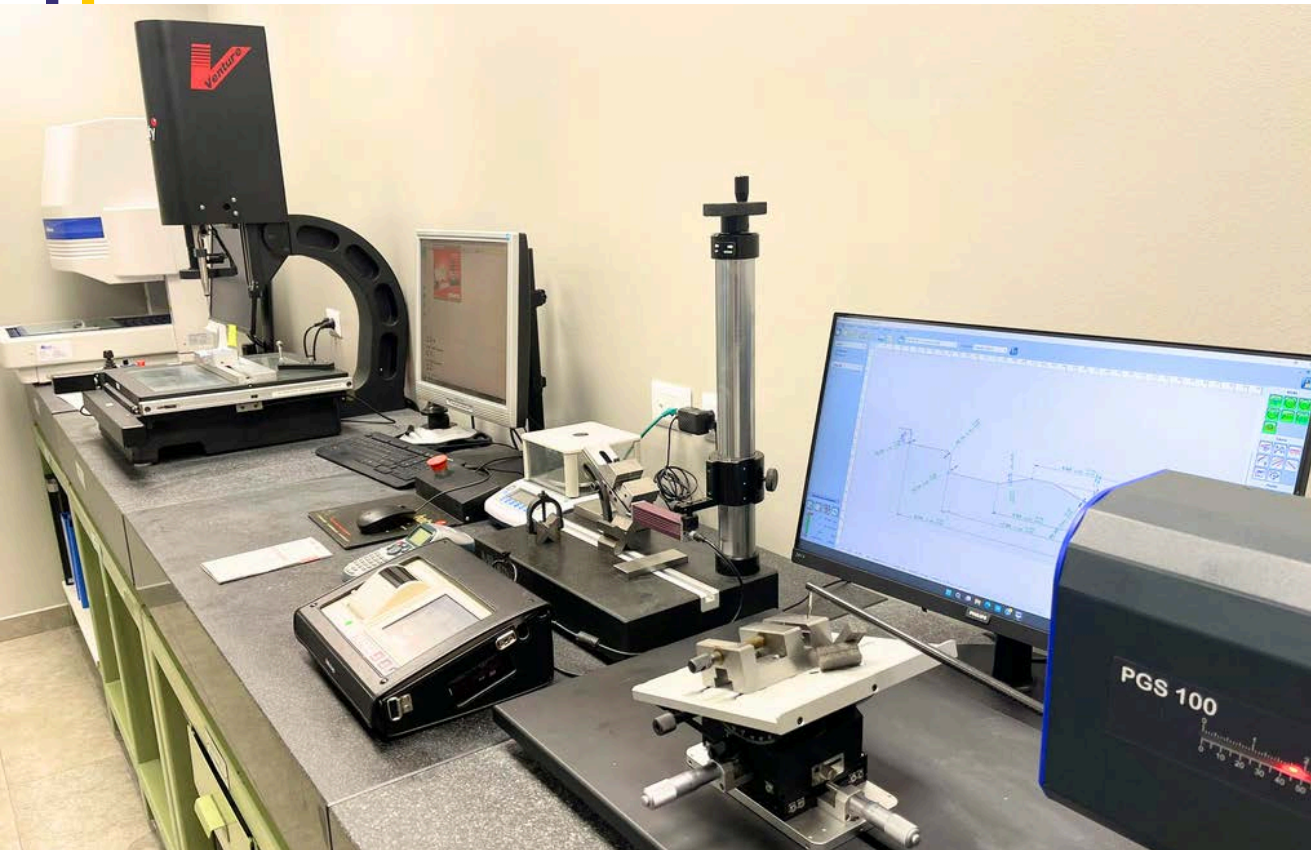
Vertical machining center **FANUC ROBODRILL α-Di21LiB5** with a capacity of 21 tools and a table equipped with a fourth axis measuring 700x400 mm, ideal for milling, drilling, and threading operations.

It is also integrated with a CAM system, which allows for the automation of production processes.



THE PRODUCTION PROCESS

1. Order entry
2. Raw material procurement
3. Machine setup
4. Processing
5. Metrology room
6. Surface treatments
7. Washing
8. Packaging and shipping

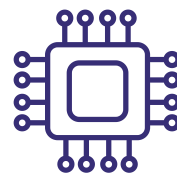
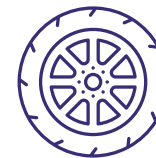
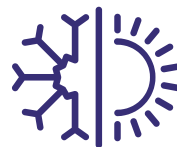




PRODUCTS & SECTORS

We manufacture various types of products for different industrial sectors, such as:

- Fittings
- Nozzles
- Valves
- Bushings
- Inserts
- Shafts
- Sleeves
- Nuts
- Nipples
- Caps
- Pins
- Hose connectors
- Pins
- Control shaft, etc.



PORTFOLIO 1/3



ASSORTED COMPONENTS



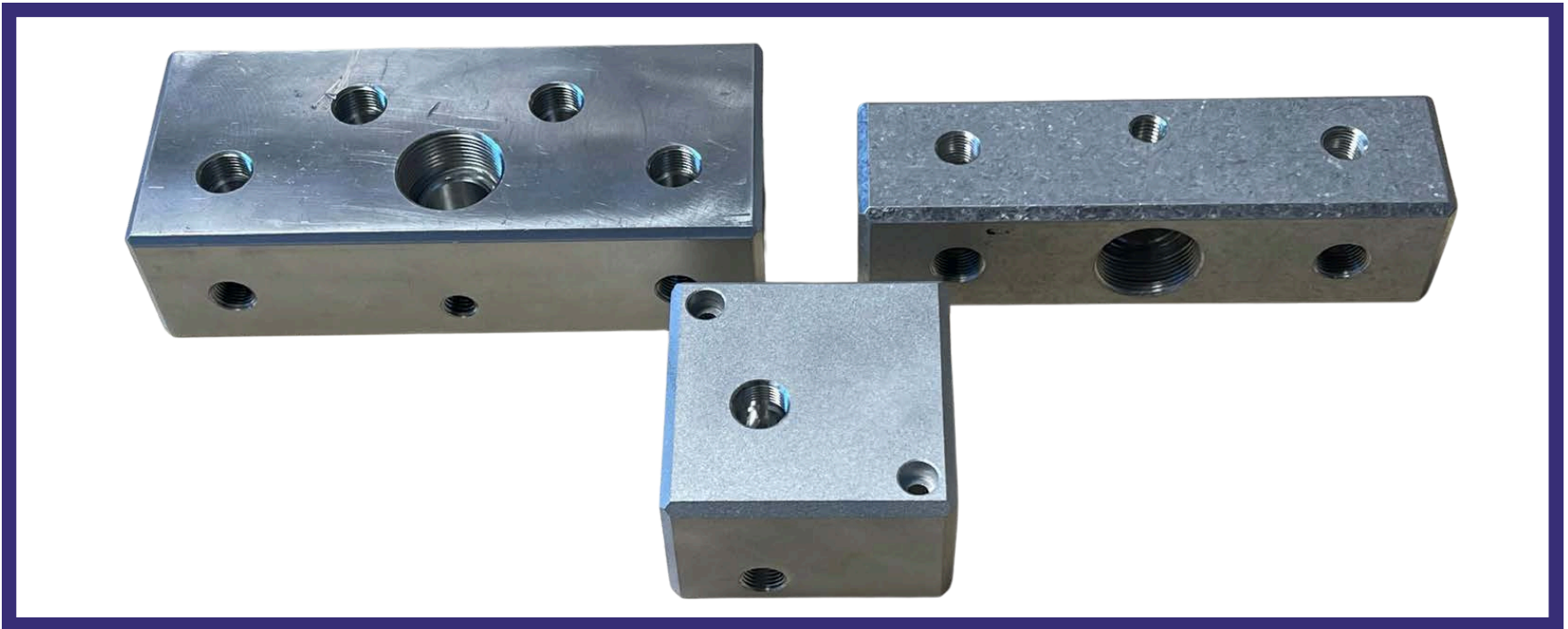
PORTFOLIO 2/3



ASSORTED COMPONENTS



PORTFOLIO 3/3



ASSORTED COMPONENTS



CONTACTS

SALES MANAGER

CHIARA BINETTI



chiara@globomeccanica.it

EXPORT MANAGER

SUSANNE LETH



export@globomeccanica.it



+39 030 9920886



Via Donatori di Sangue, 13
Verolanuova 25028 (BS)
Italy



Globo SRL Lavorazione
Minuterie Metalliche



www.globomeccanica.it



THANK YOU

